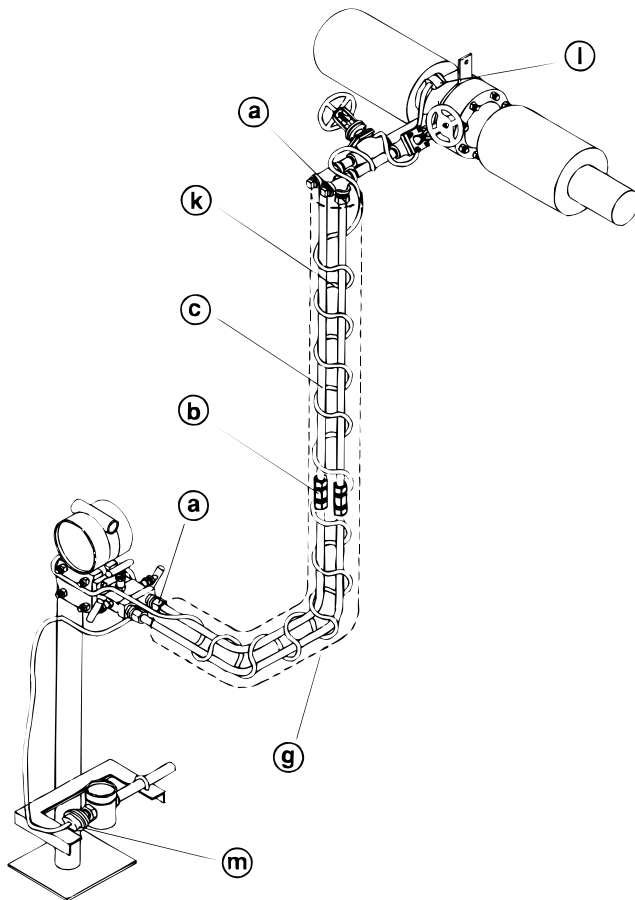




COST COMPARISON OF ELECTRIC TRACEPAK® VS. FIELD FABRICATION

Field Fabricated Electric Traced System



MATERIAL COST

1/2" MNPT x 1/2" tube SS compression fittings	
4 @ 11.80 ea. (a)	\$47.20
1/2" SS tube unions 2 @ 17.15 ea. (b)	34.30
1/2" O.D. SS x .049 seamless impulse	
line tubing 60ft @ 4.95/ft (c)	297.00
40 feet of high temperature heater cable @ 8.30/ft (k)	332.00
E100 end seal 1 @ 18.00 ea. (l)	18.00
C75-100-A power connection kit 1 @ 45.00 ea. (m)	45.00
Foamglass with jacket for 2" pipe-	
1" insulation 28 feet @ 3.01/ft (g)	84.28
Foamglass elbows with jacket for 2" pipe-	
1" insulation 2 @ 7.41 ea. (g)	14.82
TOTAL MATERIAL COST	\$872.60

LABOR COST

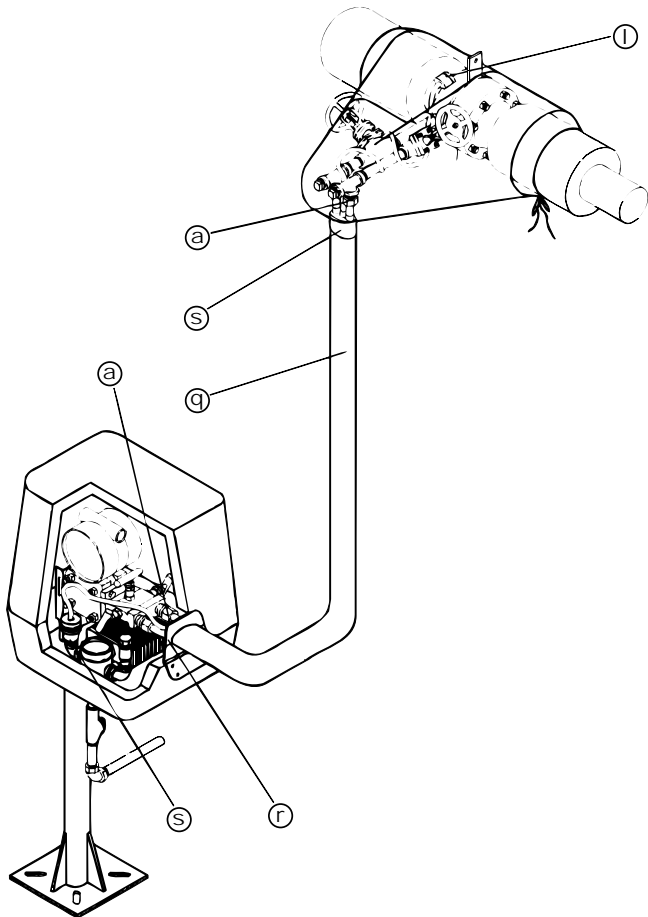
(Labor cost \$38.00/hr)	
Install impulse lines with fittings	
60 feet @ 0.40 mh/ft	24.00 hr
Install electric tracer	
40 feet @ 0.18 mh/ft	7.20 hr
Insulate 30 feet of impulse lines with tracer	8.68 hr
28 feet @ 0.28 mh/ft = 7.84 hr	
2 elbows @ 0.42 mh/ea = 0.84 hr	
Total labor hours	39.88 hr
TOTAL LABOR COST	\$1515.44

Total Field Fabrication \$2,388.04



COST COMPARISON OF ELECTRIC TRACEPAK® VS. FIELD FABRICATION

O'Brien TPE Electric Traced System



MATERIAL COST

1/2" MNPT x 1/2" tube SS compression fittings 4 @ 11.80 ea. (a)	\$47.20
T210-ET (end termination) 1 @ 22.00 (l)	22.00
T210-PC (power connection) 1 @ 81.00 (m)	81.00
TPE2-B4-B5 35 feet* @ 30.75/ft (q)	1076.25
*35 feet used to allow tracer for end fitting	
TPKSK-10 (end seal) 1 @ 14.00 ea. (r)	14.00
TPKHS-B3 (heat shrink boot) 1 @ 34.00 ea. (s)	34.00
TOTAL MATERIAL COST	\$1,274.45

LABOR COST

(Labor cost \$38.00/hr)	
Install TPE2-B4-B5 35 feet @ 0.40 mh/ft	12.0 hr
Total labor hours	12.0 hr
TOTAL LABOR COST	\$456.00

Total O'Brien TRACEPAK \$1,730.45

O'BRIEN TRACEPAK SAVINGS. \$657.59

©2004 O'Brien Corporation • QLT-TPCOST • 1 FEB 04



Worldwide Offices:
USA: 1900 Crystal Industrial Court • St. Louis, Missouri 63114 • Ph: 314/236-2020 • Fax: 314/236-2080
BELGIUM: Mallekotstraat 65 • B 2500 Lier, Belgium • Ph (+32) 3 491 9875 • Fax (+32) 3 491 9876
CANADA: Suite 400 • 609 14th Street NW • Calgary, AB T2N 2A1 • Ph 403/730-7277 • Fax 403/730-7279
obcorp@obcorp.com • www.obcorp.com