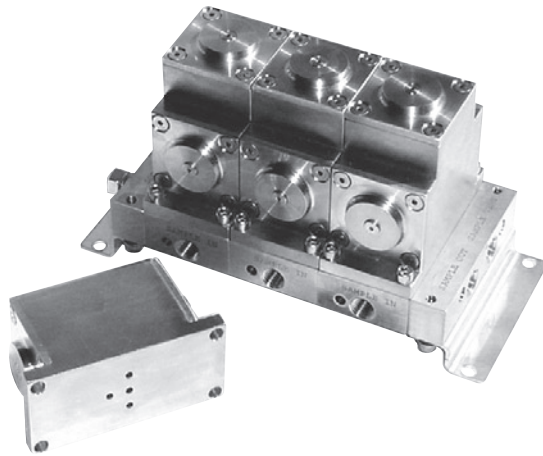
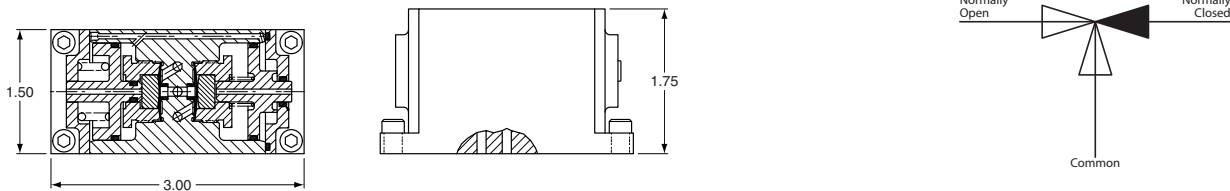


D Series



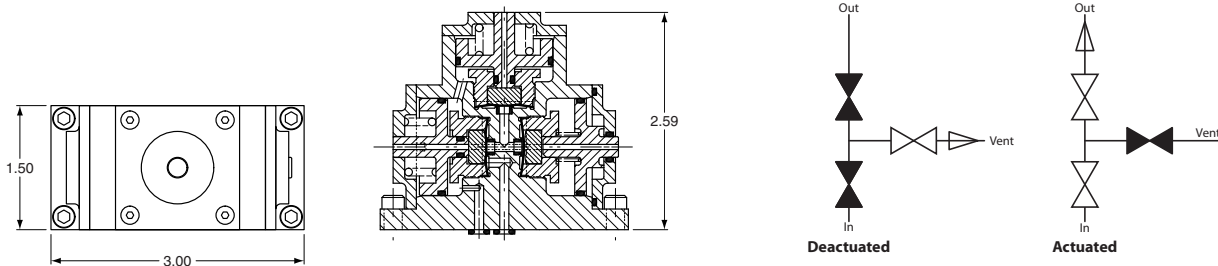
DV5 Series Type Valve Module

- Functions as modular three-way stream select assembly.



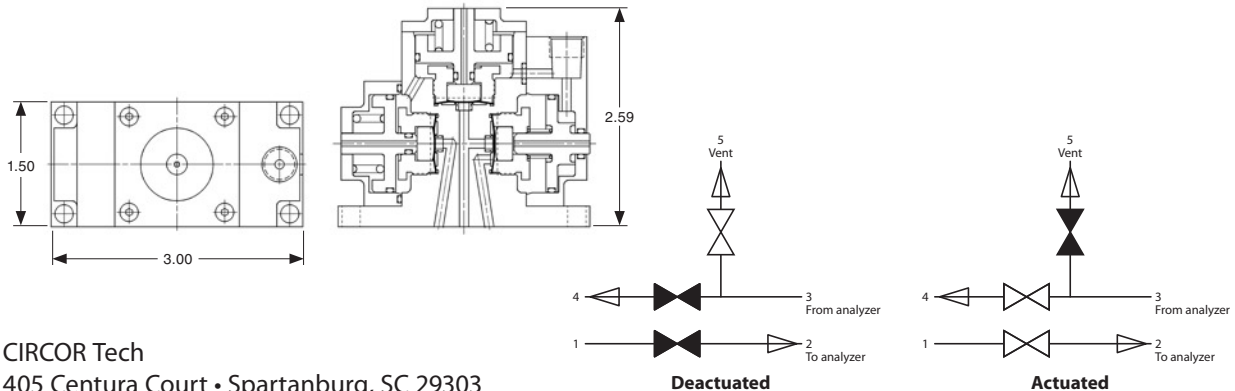
DBB Series Type Valve Module

- Functions as double block and bleed stream-select valve module.



DSV Series Type Valve Module

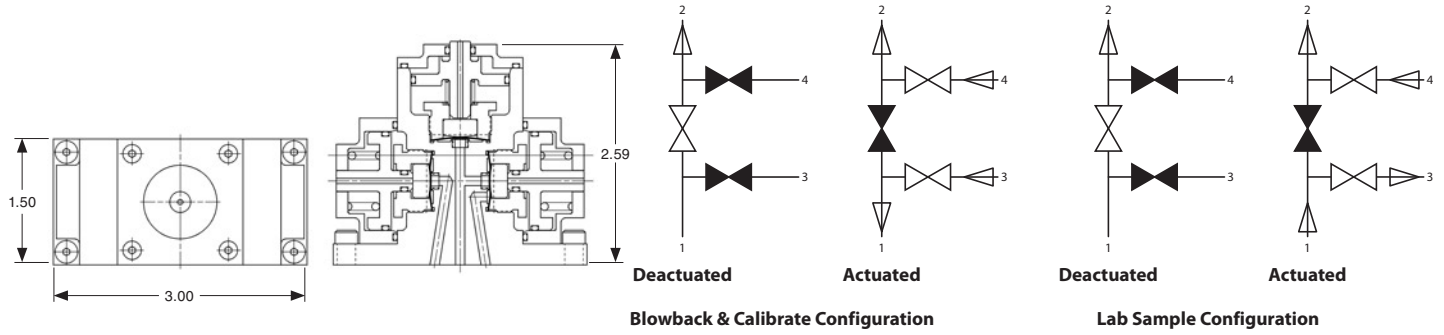
- Functions as sample vent atmospheric reference valve module for use between the switching valves and the analyzer. (Normally open vent)



D Series

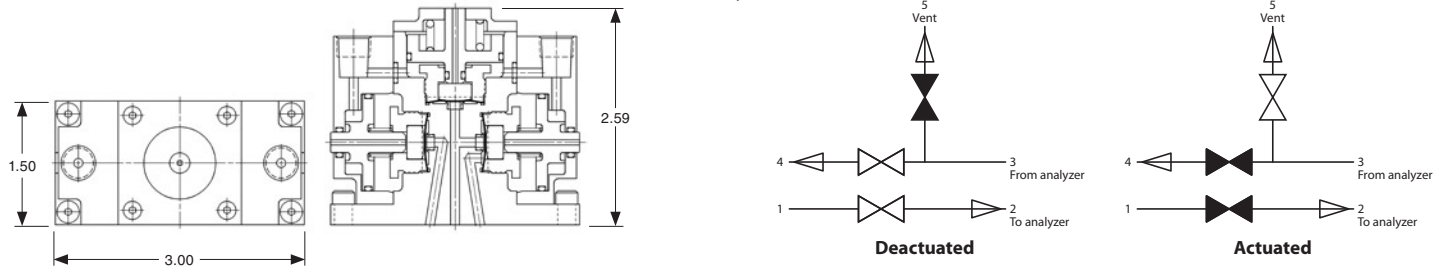
DBL Series Type Valve Module

- Functions as laboratory sample switching valve module used to direct sample media in and out of the lab sample cylinder.



DSS Series Type Valve Module

- Functions as a sample vent atmospheric valve module (normally closed vent).



DBA Series Type Valve Module

- Functions as single or multiple double block and bleed modules with the addition of a sample vent atmospheric reference valve module. The DBA assembly is a combination of DBB and DSV Series.

